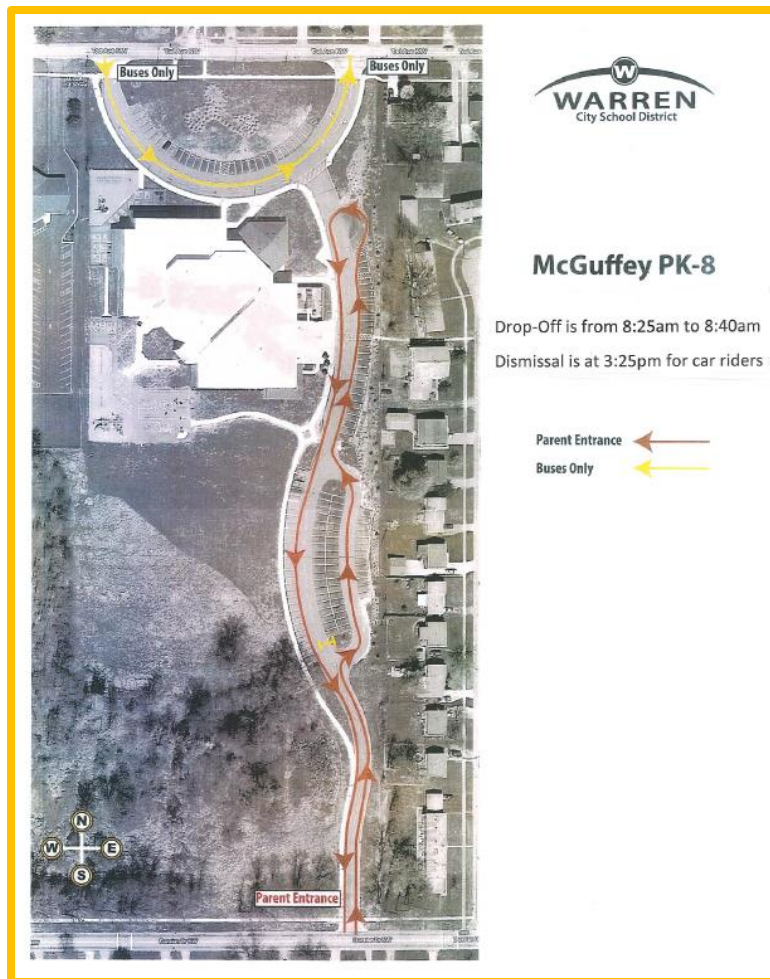


Student Drop-Off and Pick-Up Reminders

All students should be dropped off in the car rider line in the mornings. If your child is late to school, you should drop them at the main entry. Please do NOT pull in the front of the building when the buses are unloading. Cars are only permitted to enter the front lot after 8:40 in the morning.

When picking up your child, the car rider line is also on the side of the building. We do not dismiss students after 2:40 in the afternoon due to dismissal procedures and bus arrivals. If you need to pick up your child early, please make sure you arrive before that time so you can pull out of the front lot before 2:45 in the afternoon when the buses begin arriving. No cars are permitted to enter the front lot while buses are loading in the afternoons.



We also have preschool transportation in the front lot at times other than our regular arrival and dismissal times, so please be aware of any children in the parking areas when you are at the school. We need to keep all of our children safe and we need everyone's help to do that!